



Technical Packet



SPECTRA
BY COMCAST SPECTACOR

Tony's Pizza Events Center • 800 The Midway • Salina, KS 67401
(P) 785-826-7200 • (F) 785-826-7207
www.TonysPizzaEventsCenter.com

Facility Personnel

General Manager

Susan Trafton

Susan_Trafton@comcastspectacor.com

Director of Finance

Crystal-Ann Machinjili

CrystalAnn_Machinjili@comcastspectacor.com

Director of Marketing

TBD

Director of Operations

Mike Highsmith

mike_highsmith@comcastspectacor.com

Director of Food & Beverage

Alan Davis

alan_davis@comcastspectacor.com

Food & Beverage Manager

Christopher Cadle

Christopher_Cadle@comcastspectacor.com

Box Office Manager

Marideth Highsmith

marideth_highsmith@comcastspectacor.com

Sales Manager

Lee Gallion

lee_gallion@comcastspectacor.com

Event Manager

Derrick Young

Derrick_Young@comcastspectacor.com

Operations Manager

Keith Hall

keith_hall@comcastspectacor.com

Marketing & Sales Coordinator

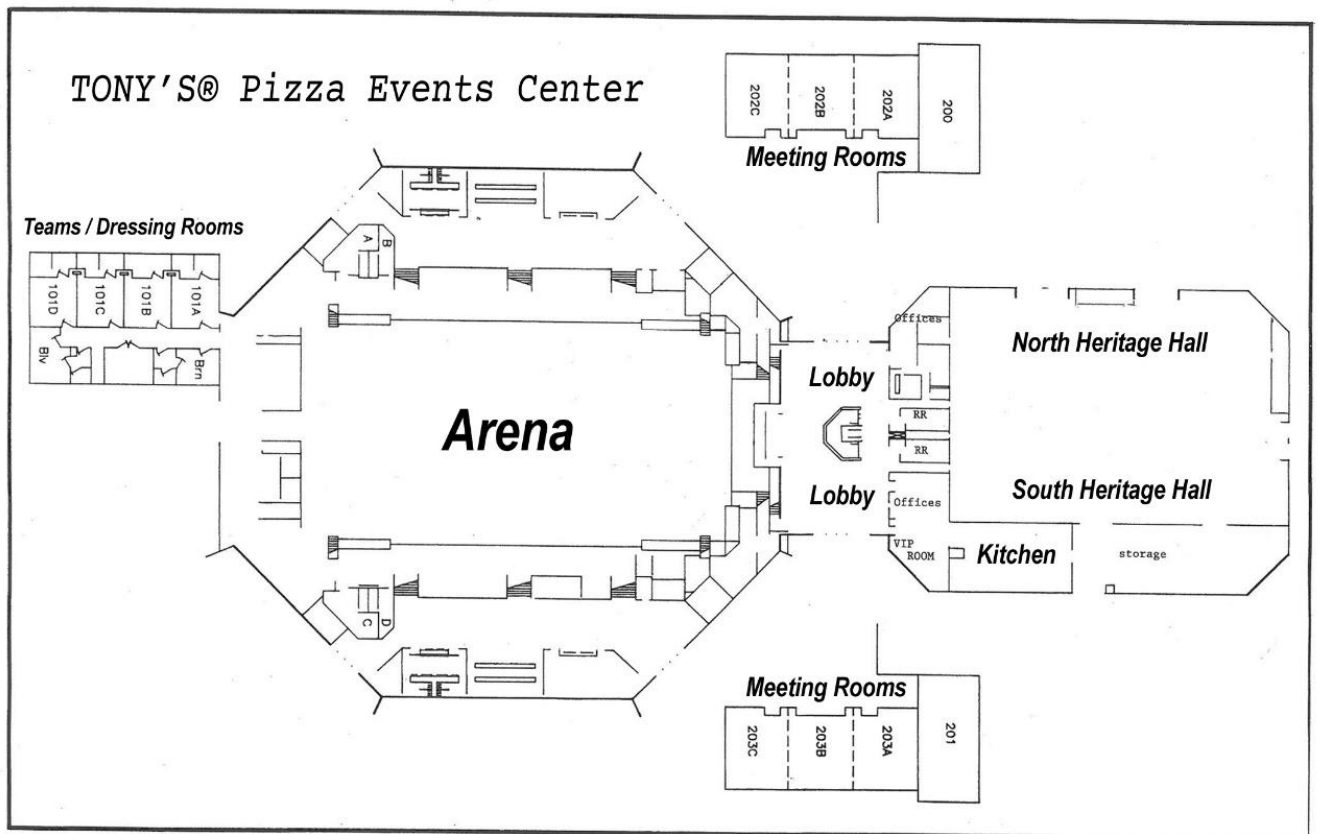
Nick Floyd

nick_floyd@comcastspectacor.com

Facility Description

Tony's® Pizza Events Center, located in Salina, KS is comprised of a 7,357 seat multipurpose arena and Heritage Hall, a newly renovated 25,000+ square foot convention space. Nicknamed *Mid-America's Meeting Place*, the Tony's Pizza Events Center provides central Kansas a place to meet, play and experience events that enhance living in and visiting the City of Salina.

The City of Salina is the primary owner of Tony's Pizza Events Center. Spectra Venue Management (spectraexperiences.com) manages the Tony's Pizza Events Center as well as over 140 other public assembly facilities around the world.



Location & Directions

Salina sits at the crossroads of Interstate 70 and Interstate 135 in Kansas. Tony's Pizza Events Center is located minutes away from the interstate.

From I-70

Exit from I-70 at Ohio Street. Once on Ohio Street, proceed south approximately three (3) miles until you reach The Midway. Make a right (west) onto The Midway and it will lead you directly to Tony's Pizza Events Center.

From I-135

Exit I-135 at Crawford St. From there go east approximately 2.5 miles to Ohio Street. Turn left (north) and proceed almost a mile to The Midway. Turn left on The Midway and it will lead you directly to Tony's Pizza Events Center.

Parking

Almost 3,700 parking spaces surround Tony's Pizza Events Center with additional parking available in the city parks adjacent to the building



World-Class entertainment has graced the stage of Tony's Pizza Events Center including national acts like:

- Darius Rucker
- Alan Jackson
- Disney Live
- The Harlem Globtrotters
- Theresa Caputo
- Rascal Flatts
- Mannheim Steamroller
- Jeff Foxworthy & Larry the Cable Guy
- Blue Man Group
- Beach Boys & The Temptations



Ticketing

The box office at Tony's Pizza Events Center is fully computerized and powered by Spectra Ticketing & Fan Engagement ticketing software. The ticketing system provides standard and customized promoter reports including ticket audits and settlement reports.

Admission tickets for any event at Tony's Pizza Events Center must be sold through the Tony's Pizza Events Center box office which is fully equipped and staffed on site.

General Information

Tony's Pizza Events Center box office is located outside the north and south entrances of Tony's Pizza Events Center.

Box Office Hours

Monday – Friday 8 a.m. – 5 p.m.

Open at least one (1) hour prior to door opening for a scheduled event.

Accepted Method of Payments

The box office accepts all major credit cards and cash for ticket purchases. The Box Office does not accept checks.

Cancelled or Rescheduled Events

All ticket sales are final. However, refunds will be made available for cancelled events. Customers will automatically be refunded for cancelled events when paying with a credit card. Any other refunds will be handled at point of sale.

Tickets purchased to events that have been postponed will be honored at the new date and time.

Group Sales

For most events, groups of 10 or more will receive a discount to ticketed events. Tony's Pizza Events Center group sales department actively pursues large groups to purchase tickets for certain events at the arena. Through an established list of group sales contacts, a group sales plan can be created to fit almost any event. Tony's Pizza Events Center can offer numerous opportunities to maximize ticket sales through numerous group sales avenues. To contact our group sales department call 785-826-7200.

Support

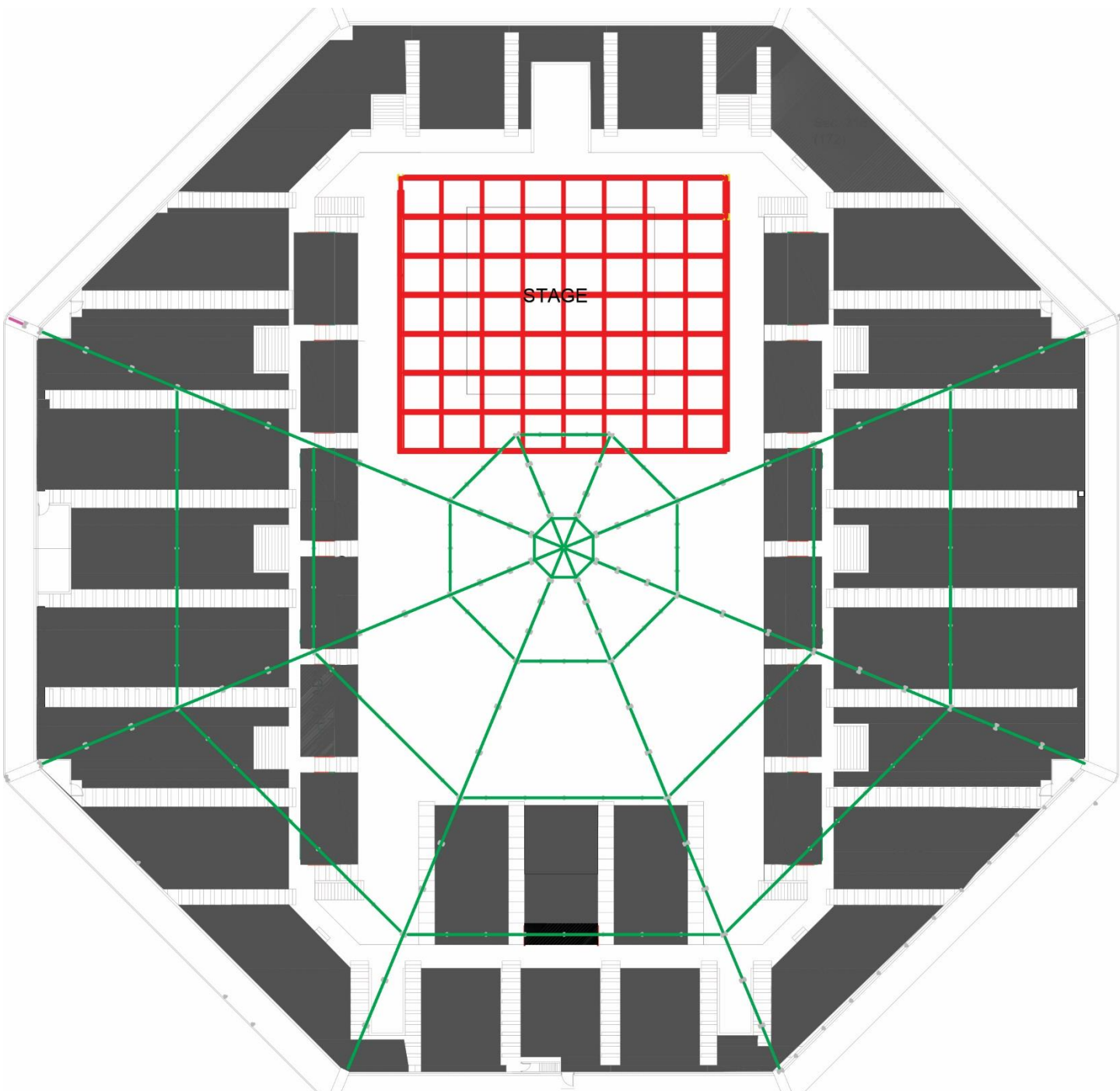
Tony's Pizza Events Center has an in-house marketing agency to assist promoters with all marketing needs. Whether you need advertising, publicity and promotional assistance, or a-la-carte support, our staff is flexible and will tailor services to your needs.

Salina, KS Marketing Information

- Total Population 47,336
- Median Age 37.1 years old
- Median Household Income \$44,710
- Per Capita Income \$23,425
- Ethnicity
 - White 86.2%
 - African American 3.7%
 - Asian 2.3%
 - Hispanic / Latino 10.7%
 - American Indian / Alaska Native .5%
 - Native Hawaiian & Pacific Islander .01 %
 - Identified by two or more 3.3%
- 3.1% Unemployment Rate
- Television is served from Wichita, KS, but advertising can be purchased locally
 - KWCH (CBS)
 - KAKE (ABC)
 - KSNW (FOX)
 - KSAS (CW)
 - KEUV (Univision)
 - KMTQ (my network TV)
- Salina area radio stations offer some locally produced programming. Eagle Communications & Rocking M Radio are the major groups.
- Salina Journal is the daily newspaper.



Tony's Pizza Events Center Rigging Grid



Seating Configuration

The multipurpose arena offers a wide range of seating options able to host intimate events for 2,500 or large scale entertainment and sports events for over 6,500. The arena easily converts from an auditorium to sports facility to exhibition hall.

Full House Capacity 6,083



Half House Capacity 4,178



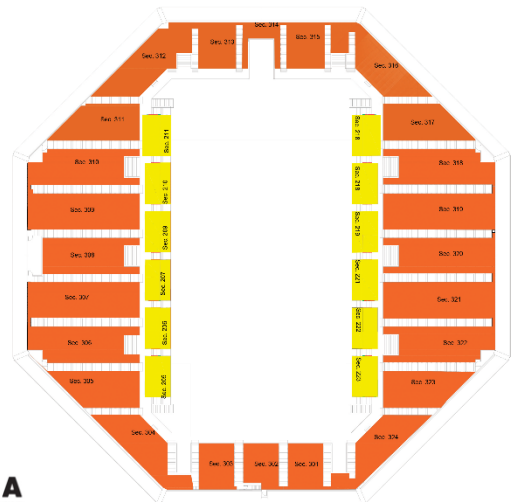
Quarter House Capacity 3,234



Basketball Capacity 6,219



Dirt Event Capacity 4,965



18,360 Square feet of column free space that can be halved or quartered to your specifications. Heritage Hall can accommodate 1,500 people with seating and staffing or host an elegant banquet for 800 people. Lighting and studio levels can be adjusted throughout the entire hall or differently in each section.

Specifications:

- Whole 120' x 153' 18,360 ft.²
- Half: 60' x 153' 9,180 ft.²
- Quarter: 60' x 76' 4,550 ft.²
- 4' x 18' Overhead Door
- 17' Ceiling Height
- 200 Amp 2 Phase 16 Series Camlock Connection
- High-Speed Wireless Internet



Catering:

Tony's Pizza Events Center offer full-service, in-house catering for groups of any size. Conferences, trade shows, wedding receptions, company holiday parties, and much more have been attended at Tony's Pizza Events Center. Buffet or plated meal service for breakfast, lunch and dinner is available.



Meeting Rooms:

Eight rooms located above the lobby at Tony's Pizza Events Center are perfect for meetings, luncheons, training sessions or seminars. The rooms can be utilized individually hosting up to 50 people in each combined to form two rooms large enough for your group of 200. Each room contains screens and projectors built into the ceiling. Audio and visual aids can be synced to play in each room or separately.

